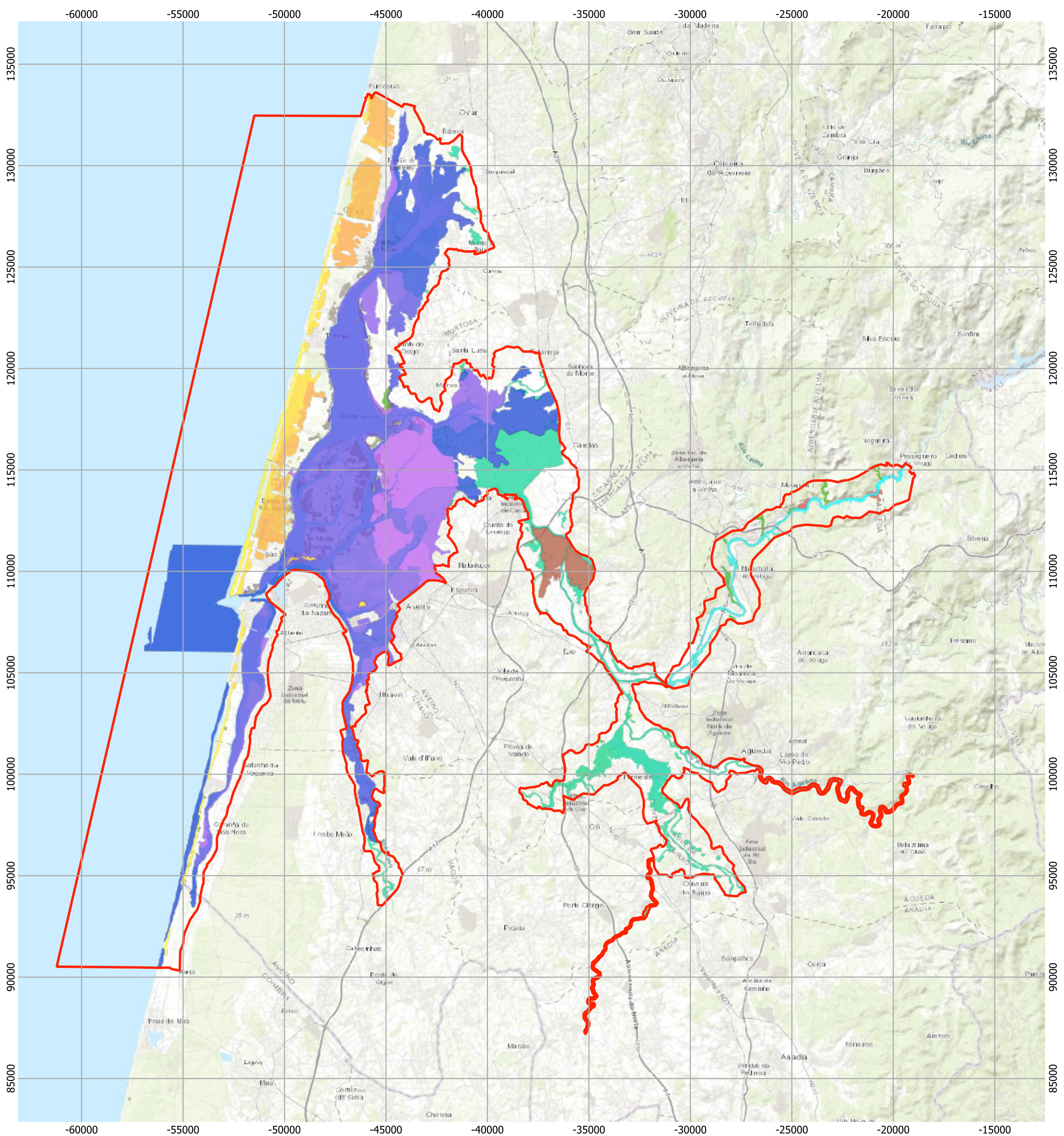


## **ANEXO 3 – CARTA DOS TIPOS DE HABITAT**





MINISTÉRIO DO AMBIENTE E DA AÇÃO CLIMÁTICA  
Instituto da Conservação da Natureza e das Florestas, I.P.

Plano de Gestão | ZEC e ZPE Ria de Aveiro e ZEC Rio Vouga

PEÇA GRÁFICA N.º 3.0

Designação: Carta dos Tipos de Habitat da ZEC Ria de Aveiro e da ZEC Rio Vouga

Data de edição: 2023-07-20

Sistema de Referência: ETRS89/Portugal TM06

Fontes: CAOP (2021), ICNF (2008), ICNF (2021), MESH-Atlantic (2013) e ESRI Topo (2022)





Legenda

Limites da Área de Estudo

 ZEC e ZPE Ria de Aveiro e ZEC Rio Vouga

Tipos de habitat (habitat alvo assinalado com [ ] )

 [1110]	 [2110] + [1210] + [2120]	 3270 + 6420 + [91E0] + [92A0]
 [1130]	 [2110] + [2120]	 3270 + 6420 + 6430 + [91E0] + [91F0] + [92A0]
 [1130] + [1330]	 [2110] + [2120] + [1210]	 4030
 [1130] + [1330] + [1420]	 [2120]	 4030 + [9330]
 [1130] + [1420]	 [2120] + [1210] + [2110]	 4030 + 8230
 [1130] + [1420] + [1140]	 [2120] + [2110]	 [6410] + [91E0]
 [1130] + [1420] + [1330]	 [2130]	 6420
 [1130] + [92D0] + [91E0]	 [2130] + [2270]	 [91E0]
 [1140]	 [2130] + [2270] + [2170]	 [91E0] + [3150]
 [1140] + [1110]	 [2130] + [2330]	 [91E0] + [9230]
 [1140] + [1130]	 [2130] + [2330] + [2170]	 [91E0] + [92D0]
 [1140] + [1330] + [1420]	 [2130] + [2330] + [2270]	 [91F0]
 [1140] + [1420]	 [2130] + [2330] + 2230	 [91F0] + [91E0]
 [1140] + [1420] + [1320]	 [2130] + [2330] + 6420	 [9230]
 [1140] + [1420] + [1330]	 [2150]	 [9230] + [9330]
 [1150]	 [2150] + [2270]	 [92A0]
 [1150] + [1420]	 [2170]	 [92D0] + [1330]
 [1330]	 [2170] + [2190] + [2270]	
 [1330] + [1130] + [1420]	 [2170] + [2190] + 6420	
 [1330] + [1140]	 [2170] + 6420	
 [1330] + [1140] + [1130]	 [2190]	
 [1330] + [1310] + [92D0]	 [2190] + [2170]	
 [1330] + [1420]	 [2270]	
 [1330] + [1420] + [1130]	 [2270] + [2150]	
 [1330] + [1420] + [1310]	 [2270] + [2150] + [2170]	
 [1420] + [1140]	 [2270] + [2150] + [2250]	
 [1420] + [1140] + [1330]	 [2270] + [2170]	
	 [2270] + [2190]	
	 [2270] + [2250]	
	 [2330] + [2130] + 6420	

MINISTÉRIO DO AMBIENTE E DA AÇÃO CLIMÁTICA  
Instituto da Conservação da Natureza e das Florestas, I.P.

Plano de Gestão | ZEC e ZPE Ria de Aveiro e ZEC Rio Vouga


PEÇA GRÁFICA N.º 3.1

Designação: Carta dos Tipos de Habitat da ZEC Ria de Aveiro e da ZEC Rio Vouga

Data de edição: 2023-07-20

Sistema de Referência: ETRS89/Portugal TM06

Fontes: CAOP (2021), ICNF (2008), ICNF (2021), MESH-Atlantic (2013) e ESRI Topo (2022)

  
  
1:180 000

